

# **The BibleTime Handbook**

**Fred Saalbach  
Jeffrey Hoyt  
Martin Gruner  
Thomas Abthorpe**

---

# **The BibleTime Handbook**

by Fred Saalbach, Jeffrey Hoyt, Martin Gruner, and Thomas Abthorpe

2.10.1

Copyright © 1999-2014 The BibleTime Team

## **Abstract**

BibleTime is a completely free Bible study program. The program's user interface is built with Qt framework, which makes it run on several operating systems including Linux, Windows, FreeBSD and Mac OS X. The software uses the SWORD programming library to work with over 200 free Bible texts, commentaries, dictionaries and books in over 50 languages provided by the Crosswire Bible Society.

The BibleTime Handbook is distributed with the BibleTime study program.

---

---

# Table of Contents

1. Johdanto .....	1
Tietoja BibleTime:stä .....	1
Saatavana olevat tehtävät .....	1
Motivaatiota .....	1
2. BibleTimen käynnistys .....	2
Kuinka BibleTime käynnistetään .....	2
BibleTimen käynnistys .....	2
Käynnistystyksen säätäminen .....	2
Starting BibleTime for the first time .....	2
3. Ohjelman toiminto .....	3
Yleiskatsaus ohjelmaan .....	3
BibleTimen osa sovellusikkuna .....	3
Kirjahylly .....	3
Suurenuslasi .....	4
Työpöytä .....	4
Etsintä teoksista .....	5
Tekstin haku avoimessa lukuikkunassa .....	5
Etsi-ikkunaan pääsy .....	5
Etsinnän asetukset .....	6
Etsinnän tulokset .....	7
Kirjahyllyn hallinta .....	8
Kirjahyllyn polun/polkujen asetus .....	8
Asenna/päivitä teos/teoksia .....	8
Poista teos/teoksia .....	9
Etsii indeksejä .....	9
Vienti ja tulostus .....	9
4. BibleTime:n asetukset .....	10
Configure BibleTime Dialog .....	10
Display .....	10
Desk .....	10
Languages .....	10
Shortcuts .....	12
5. Viittaus .....	14
Päävalikon käyttöopas .....	14
File .....	14
View .....	14
Search .....	15
Window .....	15
Settings .....	16
Help .....	16
Works reference .....	17
.....	17
Shortcuts index .....	18

---

## List of Tables

3.1. Search Types .....	7
4.1. Unicode-kirjasimet .....	12

---

# Chapter 1. Johdanto

## Tietoja BibleTime:stä

BibleTime is a Bible study tool with support for different types of texts and languages. Even large amounts of works modules are easy to install and manage. It is built on the SWORD [<http://www.crosswire.org/sword/>] library, which provides the back-end functionality for BibleTime, such as viewing Bible text, searching etc. SWORD is the flagship product of the Crosswire Bible Society [<http://www.crosswire.org>].

BibleTime is designed to be used with works encoded in one of the formats supported by the SWORD project. Complete information on the supported document formats can be found in the developers section [<http://www.crosswire.org/sword/develop/index.jsp>] of the SWORD Project, Crosswire Bible Society.

## Saatavana olevat tehtävät

Over 200 documents in 50 languages are available from the Crosswire Bible Society [<http://www.crosswire.org>]. These include:

Raamattuja	The full Bible text, with optional things like Strong's Numbers, headings and/or footnotes in the text. Bibles are available in many languages, and include not only modern versions, but also ancient texts like the Codex Leningradensis ("WLC", Hebrew), and the Septuagint ("LXX", Greek). This is the most advanced section in the library of the SWORD project.
Kirjat	Tarjollaolevat kirjat sisältävät teokset "Imitation of Christ", "Enuma Elish", ja "Josephus: The Complete Works"
Kommentaareja	Commentaries available include classics like John Wesley's "Notes on the Bible", Matthew Henry's commentary and Luther's "Commentary on Galatians." With the <i>Personal</i> commentary you can record your own personal notes to sections of the Bible.
Päivittäiset hartaukset	Monet ihmiset pitävät arvossa päivän Sanaa. Saatavillaolevat teokset sisältävät Daily Light Daily Pathilla, ja Losungenin.
Sanakirjat	Lexicons available include: Robinson's Morphological Analysis Codes, and the International Standard Bible Encyclopaedia. Dictionaries available include Strong's Hebrew Bible Dictionary, Strong's Greek Bible Dictionary, Webster's Revised Unabridged Dictionary of the English Language 1913, Nave's Topical Bible.

## Motivaatiota

Halumme on palvella Jumalaa ja teemme osamme auttaaksemme muita Jumalasuhteen kasvussa. Yritämme päästä siihen tehokkaalla, laadukkaalla ohjelmalla, ja vielä tehdä siitä yksinkertainen ja opastava käytössä. Meidän halumme on, että Jumalaa ylistettäisiin, sillä hän on kaikkien hyvien asioiden lähde.

Jokainen hyvä anti ja jokainen täydellinen lahja tulee ylhäältä, taivaan tähtien Isältä, jonka luona ei mikään muutu, ei valo vaihdu varjoksi.

—Jaak 1:17, NASB

Jumala siunatkoon sinua käyttäessäsi tätä ohjelmaa.

---

# Chapter 2. BibleTimen käynnistys

## Kuinka BibleTime käynnistetään

### BibleTimen käynnistys

BibleTime is an executable file that is integrated with the desktop. You can launch BibleTime from the Start Menu with this icon:



BibleTime can also be launched from a terminal command prompt. To launch BibleTime, open a terminal window and type:

```
bibletime
```

### Käynnistykseen säätäminen

From a terminal you can use BibleTime to open a random verse in the default bible:

```
bibletime --open-default-bible "<random>"
```

To open at a given passage like John 3:16, use:

```
bibletime --open-default-bible "Joh 3:16"
```

You can also use booknames in your current bookname language.

## Starting BibleTime for the first time

If you are starting BibleTime for the first time, you will want to configure the following options, available under the Settings menu bar.

Configure BibleTime dialog

Räätälöi BibleTimen. Tässä ikkunassa voit tehdä BibleTime:stä sellaisen kuin haluat. Katso linkistä yksityiskohtainen kuvaus lisää tietoa tästä ikkunasta.

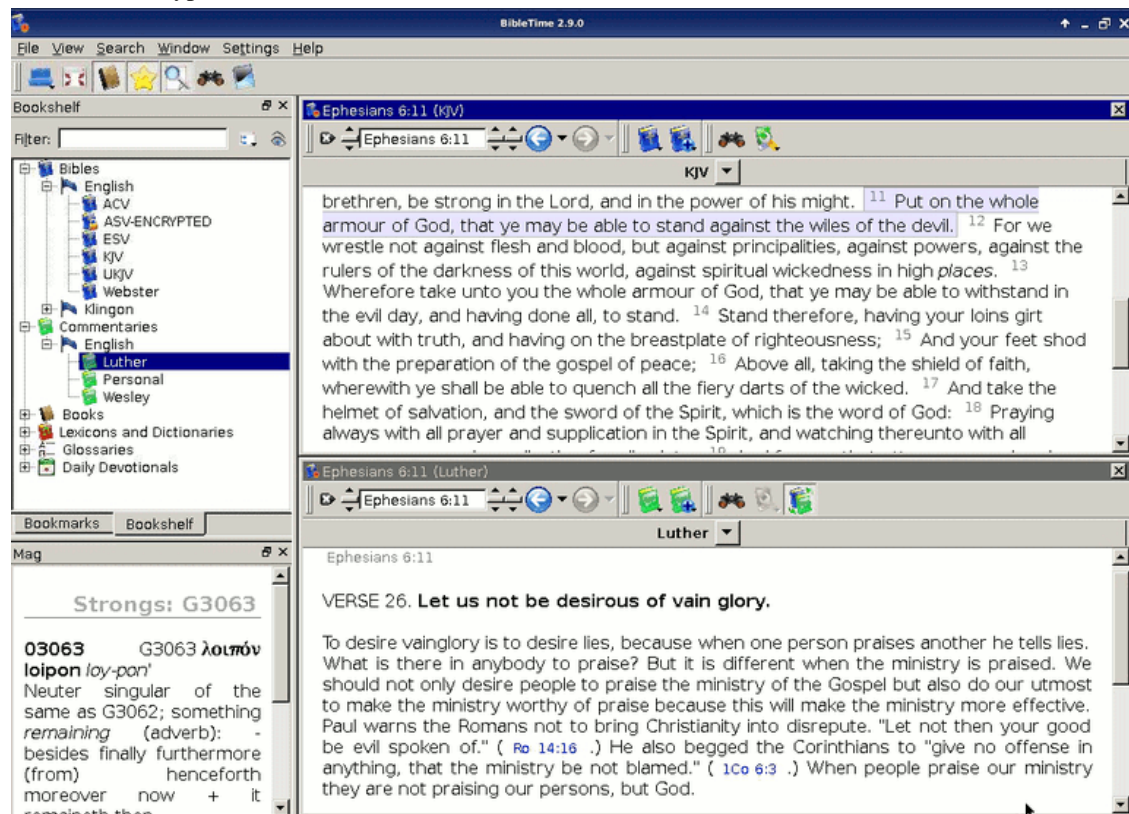
Bookshelf Manager

Modifies your Bookshelf. This dialog lets you modify your Bookshelf, add or delete works from your system. It will only be shown if no default Bookshelf can be found. Please see The Bookshelf Manager section for further details. If you start off with an empty Bookshelf, it will be helpful to install at least one Bible, Commentary, Lexicon and one Book to get to know BibleTime's basic features quickly. You can do this by clicking on the Refresh button. You will be presented with a list of works that are available from the Crosswire Bible Society

# Chapter 3. Ohjelman toiminto

## Yleiskatsaus ohjelmaan

This is what a typical BibleTime session looks like:



You can easily see the different parts of the application. The top left window is used to open installed works in the Bookshelf tab, and with the Bookmarks tab you can manage your bookmarks. The little "Mag" window below the Bookshelf is used to display extra information that is embedded in documents. When you move your mouse over a footnote marker, for example, then the Mag will display the actual content of the footnote. The toolbar gives you quick access to important functions, and the Desk on the right side is where you do your real work.

Jatkakaamme katsomalla sovelluksen eri osia erikseen.

## BibleTimen osa sovellusikkuna

### Kirjahylly

Kirjahyllyn kaikkien asennettujen teosten luettelo, lajiteltu kategorioittain ja kielten mukaan. Se sisältää kategorian "Kirjanmerkit". Sinne voit tallentaa ja hakea omia kirjanmerkkejäsi.

### Lukutehtäviä

Avataksesi teoksen kirjahyllystä lukemista varten, napsauta yksinkertaisesti vasenta hiiren nappia halutussa kategoriassa (Raamatut, kommentaarit, sanakirjat, kirjat, hartauskirjat tai sanastot) näyttääksesi sen

sisällön. Sitten napsauta yksinkertaisesti yhtä teosta avataksesi sen lukemista varten. Lukuikkuna ilmestyy työpöydälle.

If you are reading a certain work, and want to open another work at the passage you are reading, you can use a shortcut. Simply click with the left mouse button on the verse/passage reference (pointer changes to hand) and drag it to the Bookshelf. Drop it on the work you want to open, and it will be opened for reading at the specified location. You can also drag a verse reference into an existing read window, then it will jump to the specified location.

## Tehtävien lisätiedot

If you click with the right mouse button on the symbol of a work, you will see a menu with additional entries that are relevant for this work. "About this work" opens a window with lots of interesting information about the selected work. "Unlock this work" opens a small dialog for encrypted documents, where you can enter the unlock key to access the work. For additional information on locked works, please see the Locked Modules [<http://www.crosswire.org/sword/modules/aboutlocked.jsp>] page on the Crosswire Bible Society web site.

## Etsintä teoksista

You can search in a work by clicking with the right mouse button on its symbol and selecting "Search in work(s)". By pressing Shift and clicking on other works you can select more than one. Then follow the same procedure to open the search dialog. You will be searching in all of these documents. A complete description of the operation of the search features can be found on the Searching in Works section.

## Kirjanmerkkityöskentely

### Tip

Raahaa & pudota tehtävä tähän

Click with the right mouse button on the bookmark category of the bookshelf and select "Create new folder" to create a new bookmark subfolder. You can use normal drag & drop functions to drag verse references from read windows or search results to the bookmark folder, and to rearrange bookmarks between folders.

You can also import bookmarks from other people or export bookmarks to share them. To do this, open the context menu of the bookmark folder as described above, and select "Export bookmarks". This will bring up a dialog box for you to save the bookmark collection. You can import bookmarks in a similar way.

You can also click with the right on folders and bookmarks to change their names and descriptions.

## Suurennuslasi

This little window in the lower left corner of the BibleTime window is purely passive. Whenever your mouse cursor is located over some text with additional information (e.g., Strong's numbers), then this additional information will be displayed in the Mag, and not in the text itself. Just try it out.

## Työpöytä

The Desk is where the real work with BibleTime takes place. Here you can open works from the Bookshelf, read them, search in them, and even save your annotations in the personal commentary module (see below).

## Lukutehtäviä

As we have already seen, you can open works for reading simply by clicking on their symbol in the Bookshelf. A read window will open in the Desk's area. Every read window has a toolbar. There you can



find tools to navigate in the work that this read window is connected to, as well as history buttons like the ones that you know from your browser.

## Lukuikkunan sijoitus

Of course, you can open multiple works at the same time. There are several possibilities for arranging the read windows on the desk. Please have a look at the entry Window in the main menu. There you can see that you can either control the placement of the read windows completely yourself, or have BibleTime handle the placement automatically. To achieve this, you have to select one of the automatic placement modes available at Window → Arrangement mode. Just try it out, it's simple and works.

## Muokkaa omaa kommentaariasi

To be able to store your own comments about parts of the Bible, you have to install a certain work from the library of the Crosswire Bible Society [<http://www.crosswire.org>]. This work is called "Personal commentary".

If you open the personal commentary by clicking on its symbol in the Bookshelf with a left mouse button, it opens in read mode. You will not be able to edit it in this mode. Should you wish to write annotations into the personal commentary, you have to open it with the right mouse button and then select Edit this work and then either Plain text(source code editor) or HTML(basic gui wysiwyg editor).

### Tip

If Edit this work is deactivated, please check if you have write permission for the files of the personal commentary.

### Tip

Vedä ja pudota toimii tässä. Pudota jakeen viite ja jakeen teksti lisätään.

## Etsintä teoksista

### Tekstin haku avoimessa lukuikkunassa

You can look for a word or phrase in the open read window (e.g. the chapter of a bible that you're reading) just like you are used to from other programs. This function can be reached either by clicking with the right mouse button and selecting Find..., or by using the shortcut **CtrlF**. Read on to learn how you can search in entire works.

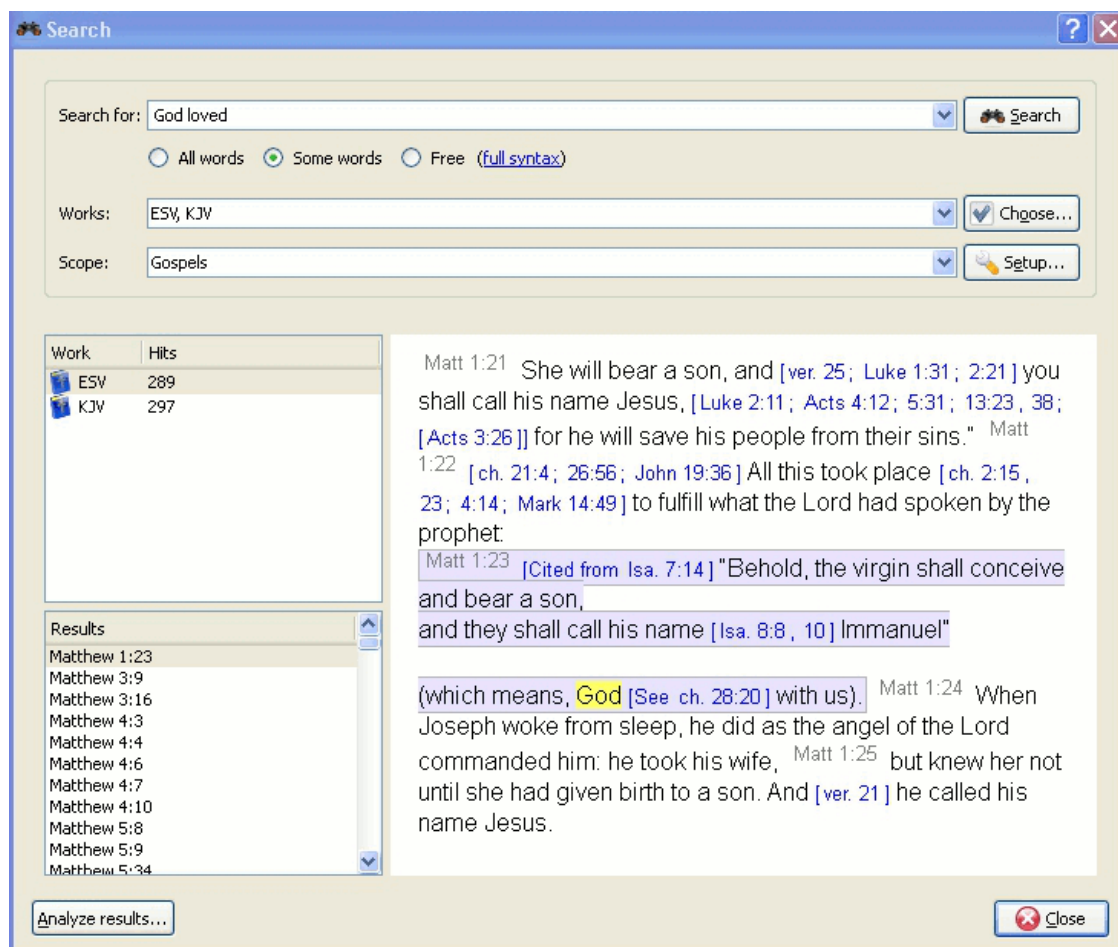
### Etsi-ikkunaan pääsy

You can search in a work by clicking with the right mouse button on its symbol in the Bookshelf and selecting Search in work(s). By holding Shift or Ctrl and clicking on other work's names you can select more than one. Then follow the same procedure to open the search dialog. You will be searching in all of these works at the same time.

You can also access the search dialog by clicking on Search from the main menu, and selecting the appropriate entry.

Kolmas mahdollisuus aloittaa hakuja on napsauttaa hiirellä hakusymbolia avoimessa lukuikkunassa.

## Etsinnän asetukset



## Tehtävien valinta

At the top of the options tab you will find Choose(works). If you would like to search in multiple works, click on this button and you will be offered a menu where you can select the works you want to search in.

## Hakualueiden käyttäminen

You can narrow the scope of your search to certain parts of the Bible by selecting one of the predefined scopes from the list in Search scope. You can define your own search ranges by clicking the Setup ranges button.

## Perushaun syntaksiohje

Enter the search phrase separated by spaces. By default the search function will return results that match all the words. If you want to find any of the words entered, select the Some words button. If you want to perform a more complex search, select the Free button. You can see examples of searches by clicking on full syntax.

You can use wildcards: '\*' matches any number of characters, while '?' will match any single character. The use of brackets allows you to group your search terms, e.g. '(Jesus OR spirit) AND God'.

To search text other than the main text, enter the text type followed by ':', and then the search term. Refer to the table below for examples.

Available text types:

**Table 3.1. Search Types**

Etuliite	Merkitys	Example
otsikko:	etsii otsikoita	heading:Jesus
alaviite:	etsii alaviitteitä	footnote:Moses
vahvennos:	etsii Strongin numeroita	strong:G535
muoto:	etsii morfologisia koodeja	morph:N-GSM

### Tip

You can right click on an installed work and select About to find which of the above search criteria may work for you. Not all works have the built in features for performing this type of search.

BibleTime uses the Lucene search engine to perform your searches. It has many advanced features, and you can read more about it here: <http://lucene.apache.org/java/docs/index.html> [<http://lucene.apache.org/java/docs/index.html>].

## Etsinnän tulokset

Here you can see how many instances of the search string were found, sorted by works. Clicking on a work with the right mouse button allows you to copy, save, or print all verses that were found in a certain work at once. This also works when you click on one or more of the references to copy, save or print them. Clicking on a particular reference opens that verse up in context in the preview window below.

### Tip

Vedä viite ja pudota se teoksen symboliin kirjahyllyssä avataksesi teoksen lukuikkunaan sen jakeen kohdalta.

### Tip

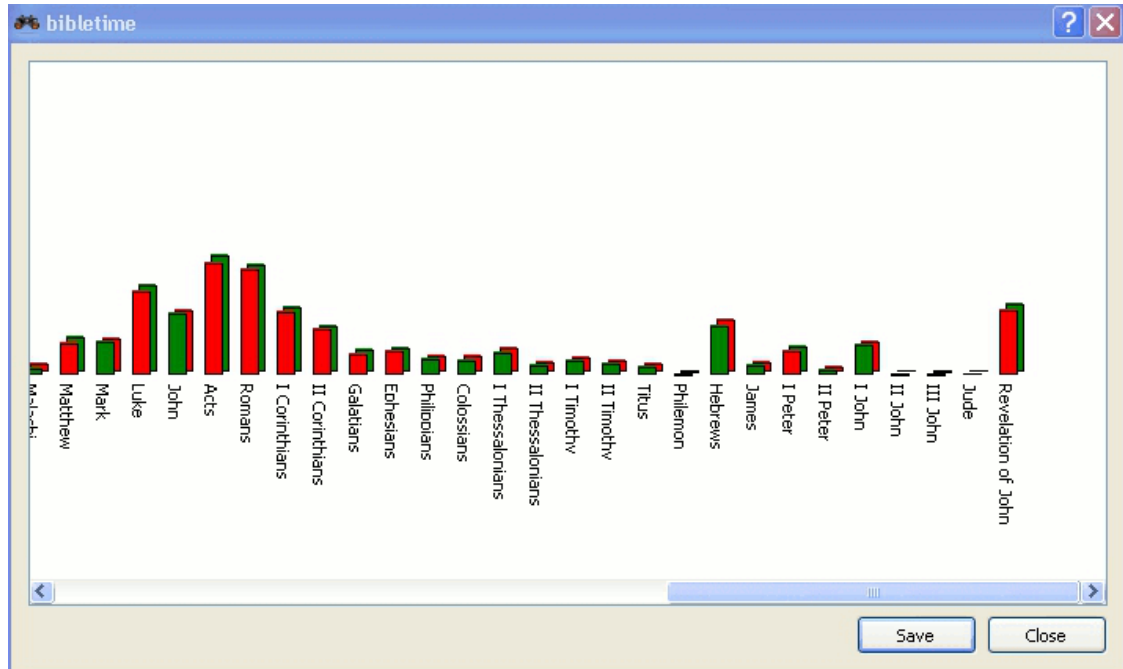
Vedä viite ja pudota se avoimeen lukuikkunaan ja lukukohta hyppää sen jakeen kohdalle.

### Tip

Valitse viitteet ja vedä ne kirjahyllyyn luodaksesi kirjanmerkkejä.

## Etsintätulosten analysointi

Click on Search analysis to open the search analysis display. This gives a simple graphic analysis of the number of instances the search string was found in each book of the Bible, and you can also save the analysis.



## Kirjahyllyn hallinta

The Bookshelf Manager is a tool to manage your Bookshelf. You can install new works to your Bookshelf, and update or remove existing works from your Bookshelf. Access it by clicking Settings → Bookshelf Manager in the main menu.

### Tip

If this is the first time you are starting BibleTime, click on the Refresh button to see a list of works provided by the Crosswire Bible Society.

## Kirjahyllyn polun/polkujen asetus

Here you can specify where BibleTime may store your Bookshelf on the hard drive. You can even store it in multiple directories. The default is "~/sword/" on \*nix and "C:\Documents and Settings\All Users\Application Data\Sword" for Windows.

### Tip

If you have a sword CD, but do not want to install all the works on the hard disk, but use them directly from the CD, then you can add the path to the CD as one of your bookshelf paths. When you start BibleTime, it will show all works on the CD if it is present.

## Asenna/päivitä teos/teoksia

With this facility, you can connect to a repository of works (called "library"), and transfer one or more works to your local Bookshelf. These libraries may be local (e.g. a SWORD CD), or remote (e.g. Crosswire's online repository of SWORD modules, or another site offering SWORD modules). You can install other sources by clicking on Get list... when you have New Installation Source dialog open. You can manage your libraries with Add library and Delete library.

To begin the installation or update process, select a library you want to connect to and a local Bookshelf path to install the work(s) to. Then click on Connect to library. BibleTime will scan the contents of the library and present you with a list of works that you can add to your Bookshelf, or that you already have installed but are available in a new version in the library, and thus can be updated. Then you can mark all works that you want to install or update, and click on Install works. They will then be transferred to your Bookshelf.

## Poista teos/teoksia

Tämä valmius mahdollistaa yhden tai useamman teoksen poiston kirjahyllystä lisätäksesi vapaata levytilan määrää. Yksinkertaisesti merkitse teokset ja napsauta Poista teokset.

## Etsii indeksejä

Tämä mahdollistaa uusien hakuindeksien luonnin ja poistettujen teosten orvoiksi tulleet indeksitiedostojen siivoamisen.

### Tip

If you are having problems with your search function, visit this feature.

## Vienti ja tulostus

In many places, you can open a context menu by clicking with the right mouse button. Depending on context, it will allow you to Select, Copy (to clipboard), Save or Print text. This works for example in the read windows, when you click on the normal text or the verse reference, or in the search result page when you click on a work or one or more verse references. It is pretty straightforward, so just try it out.

Printing from BibleTime is rather basic and is intended as a utility. If you are composing a document or presentation containing text from BibleTime works, we suggest that you use one of the presentation or editing tools on your system to format your document, rather than printing from BibleTime directly.

---

# Chapter 4. BibleTime:n asetukset

Tässä osiossa on yleiskuvaus, kuinka BibleTime:n asetuksia asetetaan. Ohjelmassa tämä löytyy päävalikon Asetukset -kohdasta.

## Configure BibleTime Dialog

BibleTime käyttöliittymä voidaan muokata monella tavalla tarpeittesi mukaan. Pääset asetusikkunaan valitsemalla Asetukset Aseta BibleTime.

## Display

Käynnistyskäyttäytymistä voidaan säätää. Valitse seuraavista valinnoista:

- Näytä aloituskuva

Näyttömallit määrittelevät tekstin renderöinnin (värit, koko jne.). Saatavana on erilaisia sisäänrakennettuja mallipohjia. Jos valitset yhden sellaisen, näet esikatselukuvan oikealla paneelissa.

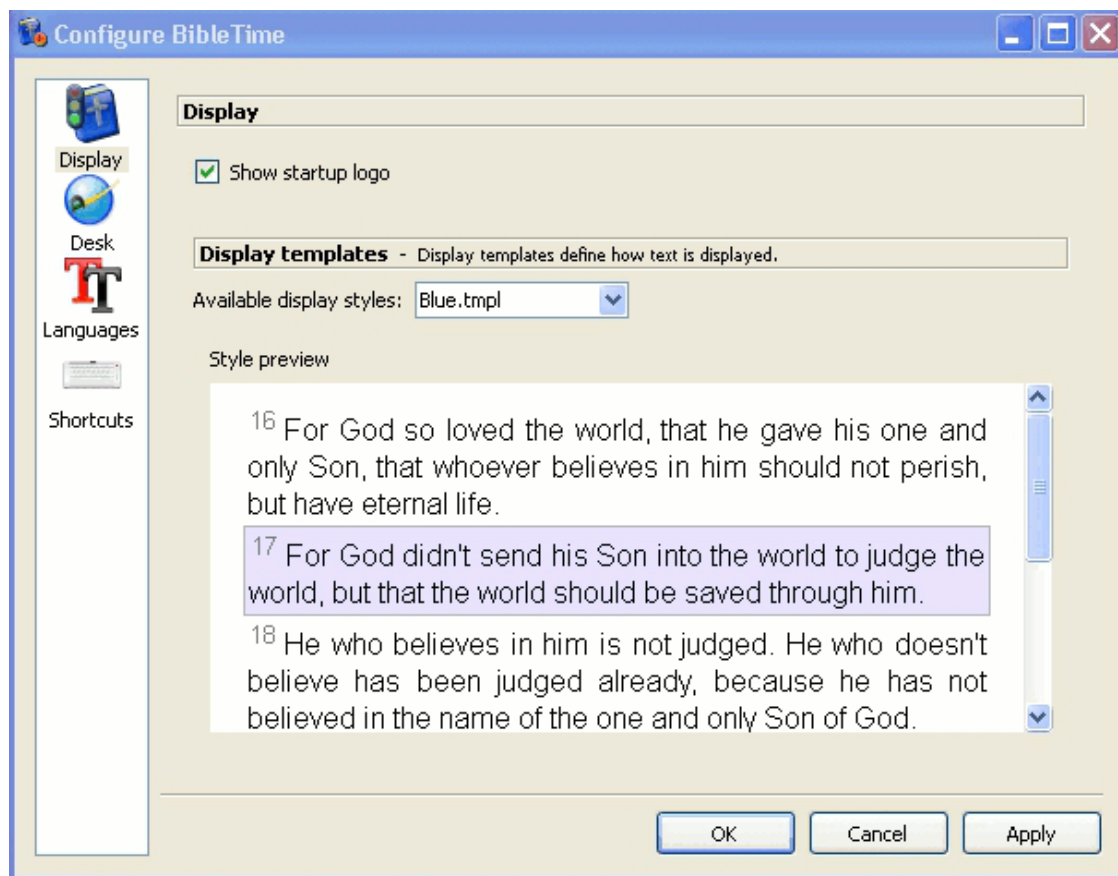
## Desk

Many features provided by the SWORD backend can now be customized in BibleTime. These features are documented right in the dialog. You also have the possibility to specify standard works that should be used when no specific work is specified in a reference. An example: The standard Bible is used to display the content of cross references in the Bible. When you hover over them, the Mag will show the content of the verses referred to, according to the standard Bible you specified. With the use of text filters, you can control the appearance of the text.

## Languages

Tässä voit määritellä, mitä kieltä käytetään kirjojen nimissä. Aseta tämä äidinkieleksesi, jos se on saatavilla. Silloin tunnet olosi kotoisaksi.

By default, BibleTime uses the default system display font. You can override this font if necessary. Some languages require special fonts to be displayed correctly, and this dialog allows you to specify a custom font for each language.



Valintaikkuna - Kirjasimet.

BibleTime can now use all supported fonts. As long as the works you are interested in display correctly nothing needs to be done here. If a work only displays as a series of question marks (?????) or empty boxes, then you know that the standard display font does not contain the characters used in this work.

To correct this, choose this work's language from the drop down menu. Select the use custom font checkbox. Now select a font. For example, a font that supports many languages is Code2000. If no installed font can display the work you are interested in, try installing the localization package for that language.

## Kirjasimien asennus

Detailed font installation instructions are outside the scope of this handbook. For further information you might want to refer to the Unicode HOWTO [<http://www.linux.org/docs/ldp/howto/Unicode-HOWTO-2.html>].

### Tip

Jos käytät pientä kirjasinta kuten Clearlyu (noin 22kb), BibleTime on nopeampi kuin suurilla kirjasimilla kuten Bitstream Cyberbit® (noin 12Mb).

## Kirjasimien hankinta

Kirjasimia voi hankkia lukuisasta joukosta lähteitä:

- Your \*nix distribution.

- Distribuutiosi lokalisointipaketit.
- An existing Microsoft Windows® installation on the same computer.
- Kirjasinkokoelma, sellainen kuin on saatavilla Adobella tai Bitstreamilla.
- Online kirjasinkokoelmat.

Unicode-kirjasimet tarjoavat enemmän merkkejä kuin muut kirjasimet, ja osa niistä kirjasimista on saatavilla ilmaiseksi. Mikään saatavillaoleva kirjasin ei sisällä kaikkia Unicode-standardin määrittelemiä merkkejä. Sinun tulee siis käyttää eri kirjasimia eri kielille.

**Table 4.1. Unicode-kirjasimet**

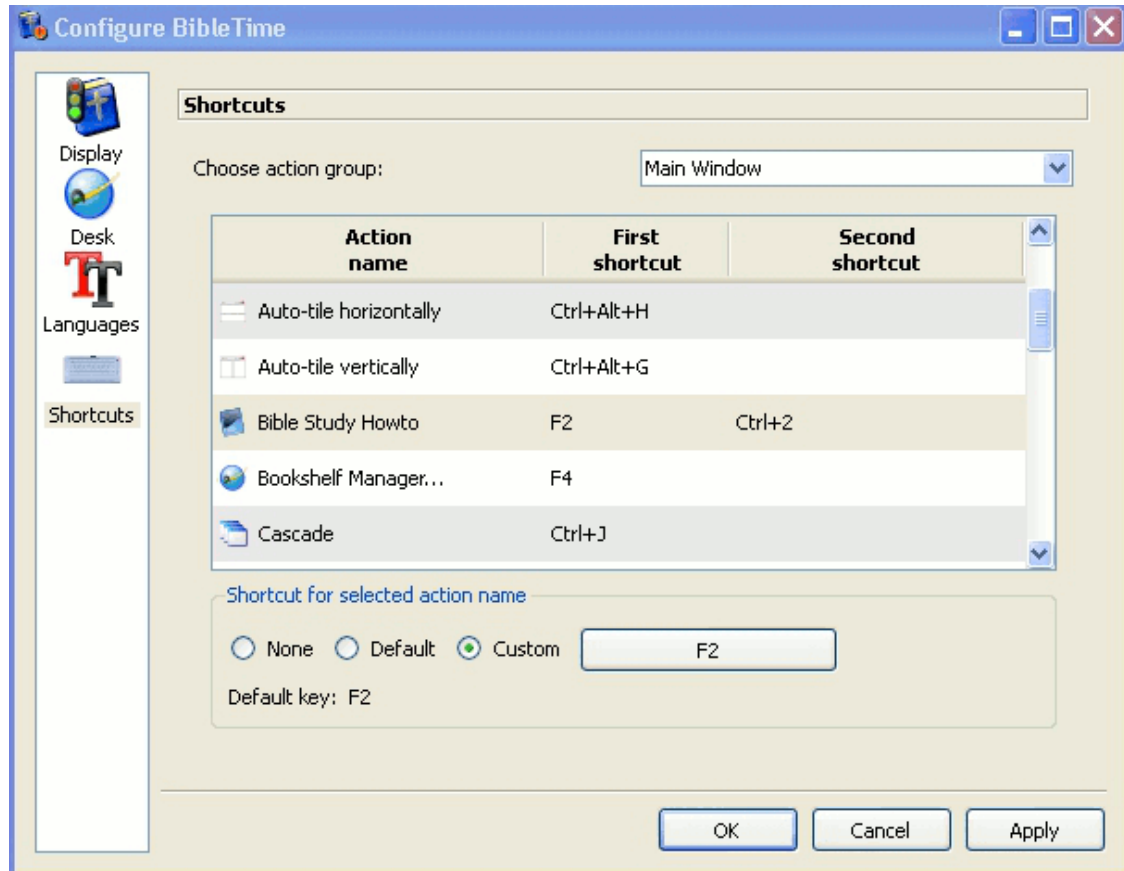
Code2000 [ <a href="http://code2000.net/CODE2000.ZIP">http://code2000.net/CODE2000.ZIP</a> ]	Ehkä paras ilmainen Unicode-kirjasin, käsittää laajan joukon merkkejä.
SIL unicode fonts [ <a href="http://scripts.sil.org/cms/scripts/page.php?site_id=nrsi&amp;cat_id=FontDownloads">http://scripts.sil.org/cms/scripts/page.php?site_id=nrsi&amp;cat_id=FontDownloads</a> ]	Excellent Unicode fonts from the Summer Institute of Linguistics.
FreeFont [ <a href="http://www.nongnu.org/freefont/">http://www.nongnu.org/freefont/</a> ]	A new free Unicode font initiative.
Crosswire's font directory [ <a href="ftp://ftp.crosswire.org/pub/sword/iso/latest/FONTS/">ftp://ftp.crosswire.org/pub/sword/iso/latest/FONTS/</a> ]	Several fonts available from the Crosswire Bible Society FTP site.
Bitstream CyberBit [ <a href="http://aol-4.vo.llnwd.net/pub/communicator/extras/fonts/windows/">http://aol-4.vo.llnwd.net/pub/communicator/extras/fonts/windows/</a> ]	Käsittää melkein koko Unicode-merkistön, mutta hidastuttaa BibleTimeä merkittävästi koon vuoksi.
Clearlyu	Sisältyy muutamiin jakeludistribuutioihin. Sisältää euroopan, kreikan, heprean ja Thai-kielen.
Caslon, Monospace, Cupola, Caliban [ <a href="http://fontforge.sourceforge.net/sfds/">http://fontforge.sourceforge.net/sfds/</a> ]	Osittainen peittävyys, katso tietoja linkitetyltä sivulta.

Netissä on hyviä Unicode-kirjasinluetteloja, kuten Christoph Singerin ( Multilingual Unicode TrueType Fonts in the Internet [<http://www.slovo.info/unifonts.htm>]), tai Alan Woodin ( Unicode character ranges and the Unicode fonts that support them [<http://www.alanwood.net/unicode/fontsbyrange.html>]).

## Shortcuts

Shortcuts (previously known as HotKeys) are special key commands that can be used in the place of the menu items and icons. A number of BibleTime's commands have predefined Shortcuts (see the Shortcuts section for a complete listing). Most of BibleTime's commands can be assigned Shortcuts. This is very helpful to quickly access the functions that you need the most.





In the preceding example, F2, Bible Study HowTo has a secondary shortcut defined, CTRL+2.

---

# Chapter 5. Viittaus

## Päävalikon käyttöopas

In this section you can find detailed descriptions of all entries in the main menu of BibleTime. They are ordered in just the way they appear in BibleTime, with all the sub-items listed under the major menu item they belong to. You can also see the shortcut of each item; a complete listing of all shortcuts can be found in the shortcuts section.

### File



File    Open work

Open work. This will give you a menu that will allow you to open installed books.



File    Quit (**Ctrl+Q**)

Closes BibleTime. BibleTime will ask you if you want to write unsaved changes to disk.

### View

→



(F5)

View    Fullscreen mode

Toggles full screen display. Toggle this setting to maximize the BibleTime window.



View    Show Bookshelf

Vaihtaa kirjahyllyn näkymisen. Vaihda tätä asetusta asettaaksesi kirjahyllyn näkyviin tai piilotetuksi. Tämä on kätevää, jos haluat lisää tilaa suurennuslasille.



View    Show Bookmarks

Toggles display of the Bookmarks. Toggle this setting to turn the Bookmarks on the left pane on or off. This can be handy if you need more space for the Mag.



View    Show Mag

Vaihtaa suurennuslasin näkymisen. Vaihda tätä asetusta asettaaksesi suurennuslasin vasemmassa paneelissa näkyväksi tai piilotetuksi.



View    Show parallel text  
headers

Toggles viewing of additional works Toggle this setting to allow you to view additional works in parallel to your current open books.

View → Toolbars → Show main  
(F6)

Toggles Main Toolbar display. Toggle this setting to turn the main toolbar on or off.

View → Toolbars → Show navigation

Toggles Navigation in works. Toggle this setting to add or remove the navigation combo box in works. This can be handy to view the full toolbar in the open works

View → Toolbars → Show works

Toggles Toolbars in works. Toggle this setting to add or remove the works icons in the open works.

View → Toolbars → Show tools

Toggles tools in works. Toggle this setting to add or remove the tools icons in the open works.

View → Toolbars → Show format

Toggles format. Toggle this setting when editing HTML in Personal Commentaries. It will add or remove the formatting toolbar.

View → Toolbars → Show toolbars in text windows

Toggles toolbars in works. Toggle this setting to add or remove the complete toolbar in open works.

## Search

Search Search in standard bible (**Ctrl+Alt+F**)Search Search in open work(s) (**Ctrl+O**)

Opens the Search Dialog to search in the standard Bible only. More works can be added in the Search Dialog. A more detailed search description can be found in the Searching in works section.

Opens the Search Dialog to search in all open works. Works can be added or removed in the Search Dialog. A more detailed search description can be found in the Searching in works section.

## Window

Window Close window (**Ctrl+W**)Window Close all (**Ctrl+Alt+W**)Window Cascade (**Ctrl+J**)Window Tile (**Ctrl+I**)Window Tile vertically (**Ctrl+G**)Window Tile horizontally (**Ctrl+H**)

Window → Arrangement mode

Closes active window.

Sulkee kaikki avoimet ikkunat.

Cascades all open windows.

Tiles all open windows.

Automatically tiles all open windows vertically.

Automatically tiles all open windows horizontally.

Controls the basic window arrangement behaviour. In the opening context menu, you can either specify that you want to take care

Window → Save session

of the window arrangement yourself (Manual mode), Tabbed, Auto-tile vertically, Auto-tile horizontally, Auto-tile or Auto-cascade. Just try them out!

Window → Save as new session  
(**Ctrl+Alt+S**)

Tallettaa suoraan nykyisen istunnon. Tämä avaa kontekstivalikon, jossa voit valita olemassaolevan istunnon talletettavaksi. Se korvaataan nykyisellä istunnollasi. Katso seuraavasta, miten istunnon voi tallettaa uudeksi istunnoksi.


Window → Load session

Lataa olemassaolevan istunnon. Tämä avaa kontekstivalikon, josta voit valita olemassaolevan istunnon ladattavaksi.


Window → Delete session

Poistaa olemassaolevan istunnon. Tämä avaa kontekstivalikon, jossa voit valita olemassaolevan istunnon poistettavaksi.

## Settings


 Settings → Configure  
BibleTime

Opens BibleTime's main configuration dialog. You can configure all kinds of nice settings there to adapt BibleTime to your needs. Please see the Configuring BibleTime section for details.


 Settings → Bookshelf  
Manager (**F4**)

Opens a dialog where you can change your SWORD configuration and manage your bookshelf. Please see the Bookshelf Manager section for details.

## Help

 Help → Handbook (**F1**)

Opens BibleTime's user guide You are reading it now.

 Help → Bible Study How-  
To (**F2**)

Opens a guide on how to study the Bible It is the hope of the BibleTime team that this HowTo will provoke the readers to study the scriptures to see what they say. This particular study guide has been chosen as it takes care not to advocate any particular denominational doctrine. We expect you to read and study the scriptures to understand what they say. If you start with the attitude that you want to have the Lord sow his word in your heart He will not disappoint you.

 Help → Tip of the Day (**F3**)

Opens a helpful tip The Tip of the Day provides a useful tip that will assist in the use of BibleTime.

Help → About

Opens a window about BibleTime project information contains information about BibleTime software version, project contributors, SWORD software version, Qt software version and the license agreement.

## Works reference

In this section you can find descriptions of the icons associated with open works.



Scrolls forward through history.



Scrolls back through history.



Select an installed bible.



Select an additional bible.



Search in selected works.



Display configuration.



Select an installed commentary.



Select additional commentary.



Synchronize displayed entry with active Bible window.



Select a book.



Select an installed glossary or devotional.



Select an additional glossary or devotional.

# Shortcuts index

This is an index of all shortcuts and their corresponding description in the handbook. The shortcuts are sorted (roughly) alphabetical. If you want to directly find out which shortcuts a certain menu item has, you can either look at the entry itself in BibleTime (as it always shows the shortcut), or you can look it in the Main Menu reference.

Shortcut	Kuvaus
<b>Alt+Left</b>	Siirtyy lukuikkunan historiassa taaksepäin.
<b>Alt+Right</b>	Siirtyy lukuikkunan historiassa eteenpäin
<b>Ctrl+Alt+F</b>	Search → Search in default bible equivalent; opens the search dialog to search in the default bible.
<b>Ctrl+Alt+G</b>	Window → Arrangement mode → Auto-tile vertically equivalent; toggle automatic window tiling.
<b>Ctrl+Alt+H</b>	Window → Arrangement mode → Auto-tile horizontally equivalent; toggle automatic window tiling.
<b>Ctrl+Alt+I</b>	Window → Arrangement mode → Auto-tile equivalent; toggle automatic window tiling.
<b>Ctrl+Alt+J</b>	Window → Arrangement mode → Auto-cascade equivalent; toggle automatic window cascading.
<b>Ctrl+Alt+M</b>	Window → Arrangement mode → Manual mode equivalent; toggle manual window placement.
<b>Ctrl+Alt+T</b>	Window → Arrangement mode → Tabbed equivalent; organizes windows with tabs across the top.
<b>Ctrl+Alt+S</b>	Window → Save as new session equivalent; saves current layout as new session.
<b>Ctrl+Alt+W</b>	Window → Close all equivalent; closes all open windows.
<b>Ctrl+-</b>	Loitonna. Tämä pienentää kirjasimen kokoa lukuikkunoissa.
<b>Ctrl++</b>	Lähennä. Tämä suurentaa kirjasimen kokoa lukuikkunoissa.
<b>Ctrl+A</b>	Valitse kaikki. Tämä valitsee kaikki tekstit lukuikkunassa.
<b>Ctrl+C</b>	Kopioi. Tämä kopioi valitun tekstin leikepöydälle.
<b>Ctrl+F</b>	Haku. Tämä etsii lukuikkunan tekstistä.
<b>Ctrl+G</b>	Window → Tile vertically equivalent.
<b>Ctrl+H</b>	Window → Tile horizontally equivalent.
<b>Ctrl+I</b>	Window → Tile windows equivalent.
<b>Ctrl+J</b>	Window → Cascade windows equivalent.
<b>Ctrl+L</b>	Change location. Changes focus to the toolbar field for the selected work.
<b>Ctrl+N</b>	Search with works of this window.

Shortcut	Kuvaus
<b>Ctrl+O</b>	Search → Search in open work(s) equivalent; opens the search dialog to search in all currently opened works.
<b>Ctrl+Q</b>	File → Quit equivalent; closes BibleTime.
<b>Ctrl+W</b>	Sulkee nykyisen ikkunan.
<b>F1</b>	Help → Handbook equivalent; opens the handbook.
<b>F2</b>	Help → BibleStudy HowTo equivalent; opens the BibleStudy HowTo.
<b>F3</b>	Help → Tip of the Day Opens a helpful tip to use BibleTime.
<b>F4</b>	Settings → Bookshelf Manager equivalent; opens the Bookshelf Manager.
<b>F8</b>	View → Show Bookshelf equivalent; toggles display of the Bookshelf.
<b>F9</b>	View → Show mag equivalent; toggles display of the mag(nifying glass).